

CORPORATE PROFILE



CRAFTING EXCELLENCE



Table of Contents

CRAFTING EXCELLENCE

TRANSFORMING SOLUTIONS

Engineering
Manufacturing
Management

SPECIALIZED EXPERTISE

Structures
Spaces
Objects

ACHIEVING LUXURY

Hospitality
Commercial & Institutional
Residential

CONSTRUCTIVE IMPACT

Environmental, Social, & Governance
(ESG) Commitments
Our People

SPEARHEADING THE INDUSTRY

CULTURE OF EXCELLENCE



Since our inception in 1940 in Beirut, our primary objective has been to be a crucial partner in transforming exceptional visions into reality.

We have consistently achieved this by upholding a resolute commitment to excellence in both project management and quality assurance.

TECMAN expertise includes extensive tailor-made high-end services on interior and exterior designs across luxurious hotel chains, malls, museums, and top-tier commercial buildings.

We implement a comprehensive Quality Management System that covers every aspect of engineering, manufacturing, and management. Our trademark of excellence extends globally.

Crafting Excellence



Transforming Solutions



1. TECMAN Engineers using their know-how and assisted by Advanced Design Software, rationalize the process by converting complex steel structures into an easy and efficient multi levels model-based process.
2. TECMAN Engineers develop conceptual design Drawings using BIM to ensure synchronized and accurate fit-out dimensions that align across various construction trades.
3. The designs and information are then shared with production. Our team of engineers continue to ensure all information and processes are accurately and timely delivered. Essential to our team is working with the latest technology: Industry 4.0 using CAD/CAM software integrated with Manufacturing Resource Planning (MRP).

Achieving it all while meeting the client's highest material requirement as TECMAN is FSC Chain-of-Custody Certified.

As third-party certified, we study and design fire integrity and sound insulation requirements for doors and other objects as well as fabricate fire-rated doors for up to 120 minutes.



Engineering

Our process is simple; we collaborate from idea generation and assist, as partners to all stakeholders, in providing design solutions.

Our approach is grounded. It is the process beginning with the combination of our technical expertise and the architect's conceptual design requirements to ensure a turnkey solution that complies with international standards, stays true to the architect's design and stays within budget.



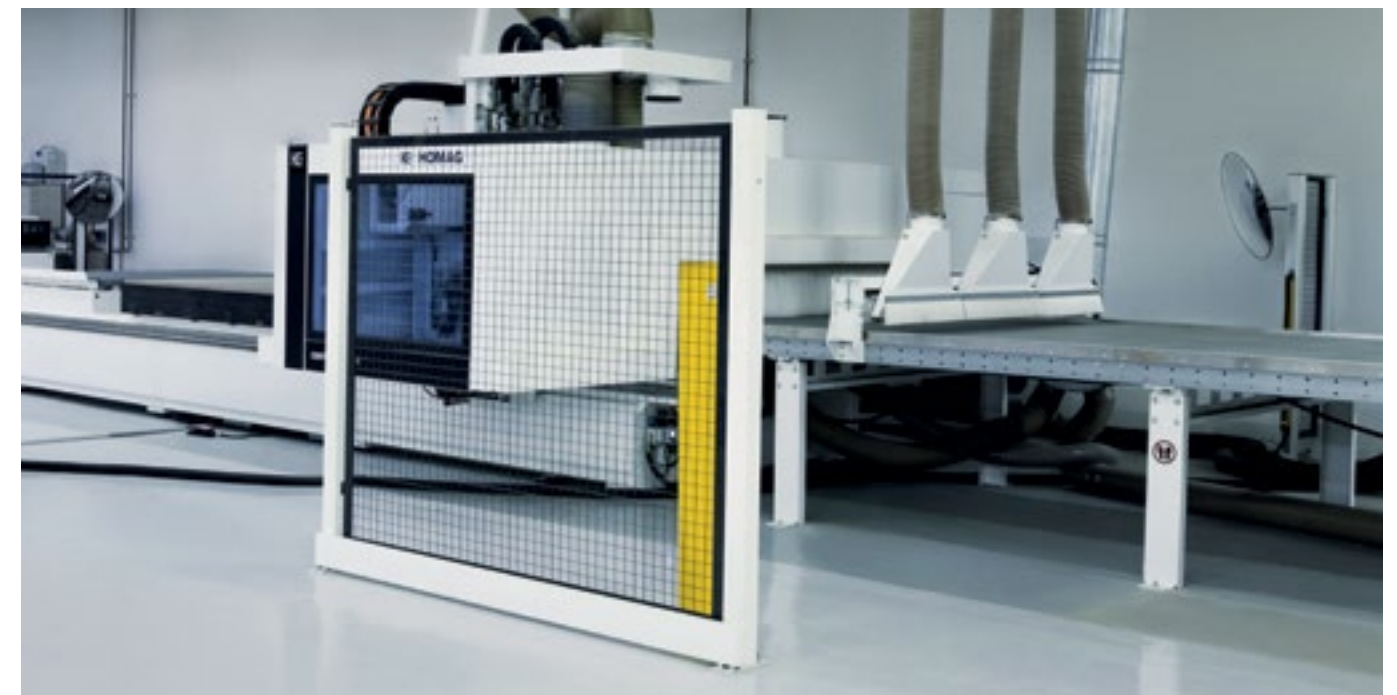


Manufacturing

Our manufacturing process is based on a combination of machine technology and master craftsmen.

Once a solution has been finalized, we start the machining process through our state-of-the-art digitized machinery, operated by expert personnel. As part of our relentless manufacturing evolution, we ensure our smart machines are on par or beyond, and that machine learning training is continuously done. Throughout the process, we utilize the Industry 4.0 manufacturing ecosystem.

However, human expertise should never be undermined, as such the finishing, assembly and manufacturing of exceptional masterpieces are made manually by our dedicated craftsmen.





Management

Our commitment is internally executed through a hands-on approach. Partnering all the necessary talents to deliver safely, on time and with exceptional quality. This is founded on mutual respect towards our clients and their needs. Our ISO 9001-2000 certification ensures that we maintain these standards during every stage of the project, as well as ensuring the essential resources are available from planning, to engineering, procurement, construction, cost control, HSE and beyond.



Specialized Expertise



Structures

Our team specializes in converting visionary concepts into tangible bespoke structures crafted from high-quality materials such as steel, stainless steel, and wood. Through the utilization of advanced parametric design platforms, we work closely alongside esteemed designers and architects to achieve beautiful, efficient, functional, and secure safe structures.

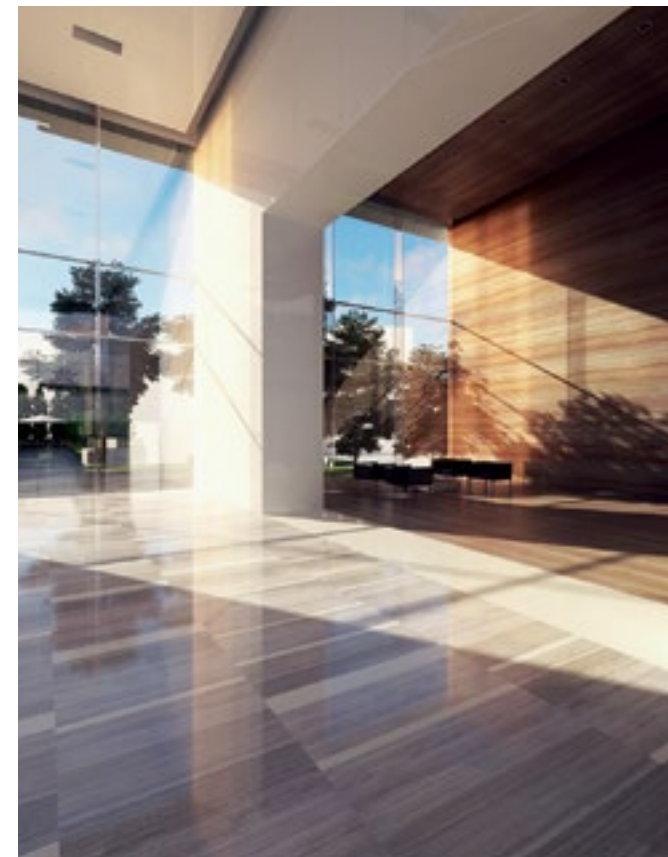




Spaces

TECMAN Engineers collaborate with clients, architects and interior designers to create bespoke environments that exude the perfect ambiance. We transform their vision into reality.

Whether it's historic restoration, rehabilitation, or fit-out works, our proven track record in delivering superior results is evidence of our commitment to excellence.



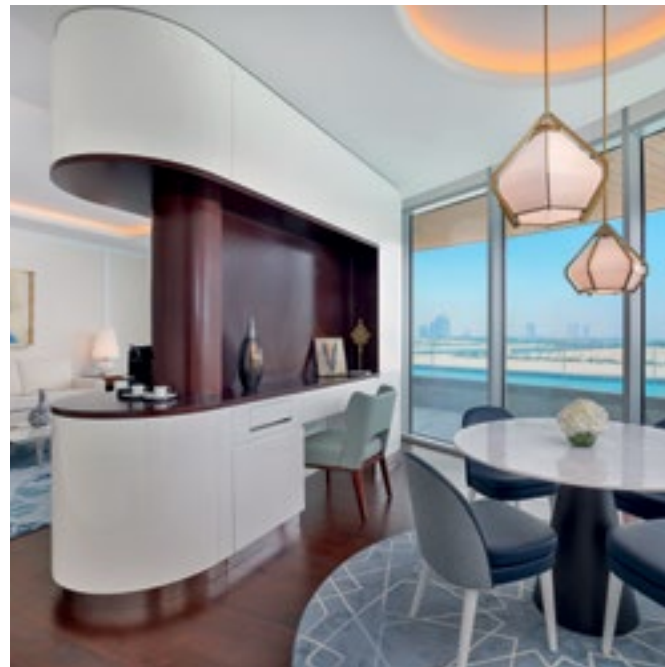


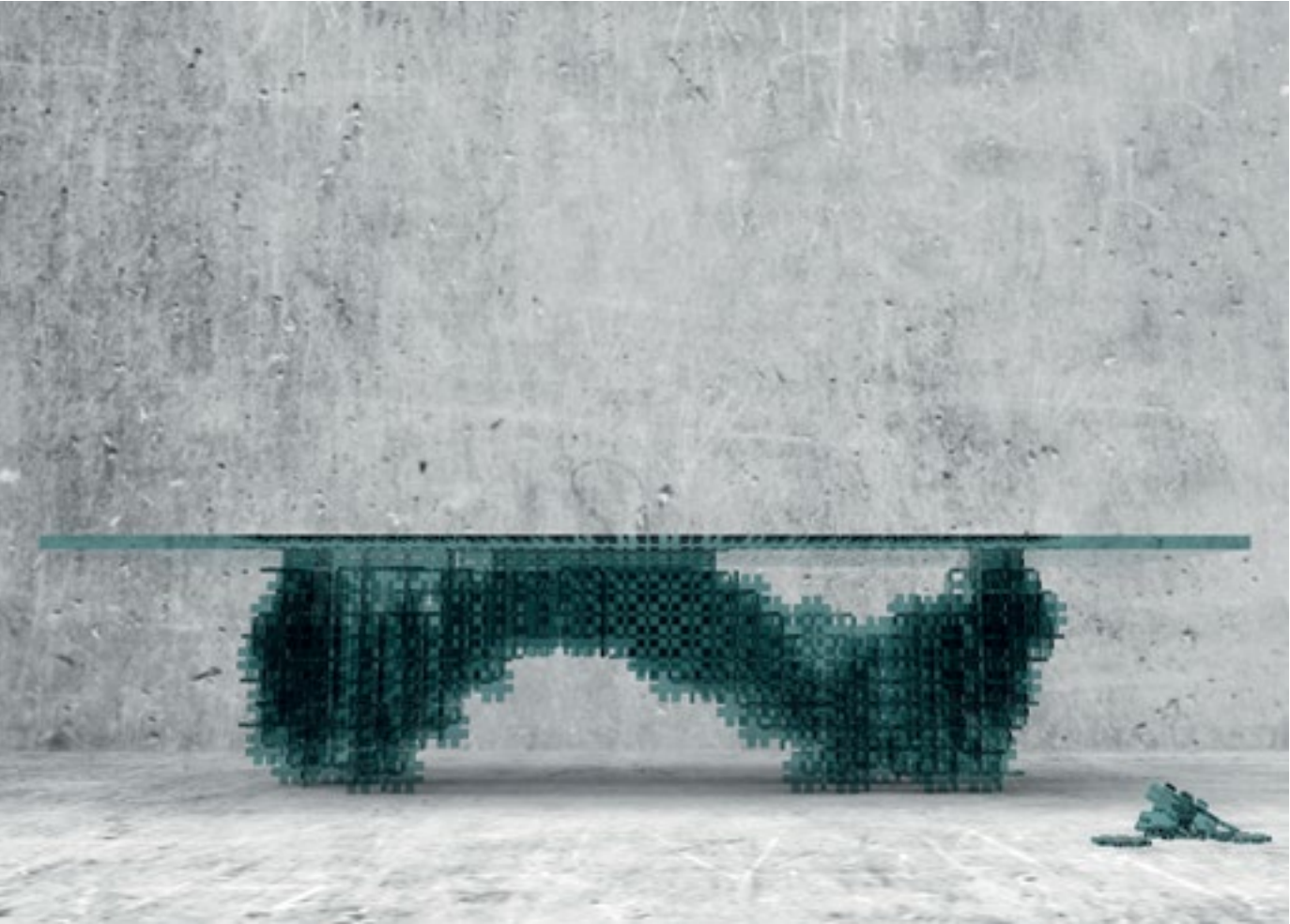
Objects

With an engineer's mind, coupled with the discerning eye of a critic, we work on each object with precision and expertise.

Our goal is to ensure a supreme quality of our objects by paying meticulous attention to the smallest details and by adhering to the applicable international standards throughout the fabrication process.

This commitment to excellence ensures that our objects have a perfect finish that sets them apart from the rest.







Achieving Luxury

PROJECTS

Hospitality



Klotild Palace

Description

Conversion of the 1904 Klotild Palace into the St Regis Hotel Budapest. The 5-star hotel will feature 102 guest rooms and suites, a full SPA facility, restaurant, café, St Regis Bar, and a conference facility. The palace is a famous UNESCO World Heritage site in Budapest, sitting in the heart of the city center, next to the Danube River. It will be part of St. Regis, Marriott's most luxurious brand. The design is led by French award-winning interior designers and architects Moinard-Betaille (4BI & associés).

Package

Millworks and FF&E

Built-up area (m²)
11,250

Completion Date
2026

Consultant
Engineer: Sentient

Architect
Moinard Betaille

Location
Budapest, Hungary



St Regis beachfront villas

Description

Our scope of work includes the core and shell woodwork for the St. Regis Red Sea Resort on Ummahat Island. The project consists of the installation of 90 cabanas and over-water villas and 9 Front of House assets serving as Reception, Restaurants, Sports Club, Gym & Spa. As well as design, fabrication and installation of 8 ancillary buildings House Keeping pods, Yoga pavilion and treatment pods.

Package

Wood Works

Built-up area (m²)

15,601

Completion Date
2023

Consultant
Atkins

Architect
DEWAN / Kengo Kuma

Location
Red Sea, KSA



Waldorf Astoria by Alar Lusail

Description

Located within the Qatar Entertainment City - Lusail with a built-up area of 95,000 m², the 461-room Alar Hotel is comprised of two basement floors, a ground floor and 12 floors, including a spa, restaurants, a ballroom, lounges, terraces, landscaping works, swimming pools and kids play areas, with a section for offices and utility areas. Furthermore, the scope of works also includes marine works which incorporate environmental study, geotechnical investigation works, design, supply and laying of beach sand, Rock Groyne, and installation of Jetty along with gangway and pontoon.

Package

Wood Works

Built-up area (m²)

100,000

Completion Date

2022

Consultant

WSP WATG & Shaker Consultancy Group
& PYR Design

Architect

WATG

Location

Doha, Qatar



Habtoor Grand Hotel

Description

This 5-star luxury hotel in Beirut consists of 25 floors with a total built-up area of 38,000m² and is comprised of 200 guest rooms, shops, restaurants, conference rooms, a ballroom, swimming pool, parking spaces and services.

Package

Fit out works

Built-up area (m²)
38,000

Completion Date
2002

Consultant
Khatib & Alami

Architect
Khatib & Alami

Location
Beirut, Lebanon



Holiday Inn Doha

Description

Located at the business park, the Holiday Inn Hotel is a 4-star hotel consisting of 307 rooms including amenities, a ballroom, restaurants, a swimming pool, and support areas with an approximate built-up area of 35,000 m². Our scope includes turnkey construction: enabling, structural, architectural, fit-out and electro-mechanical works.

Package

Joinery Works & FF&E

Built-up area (m²)

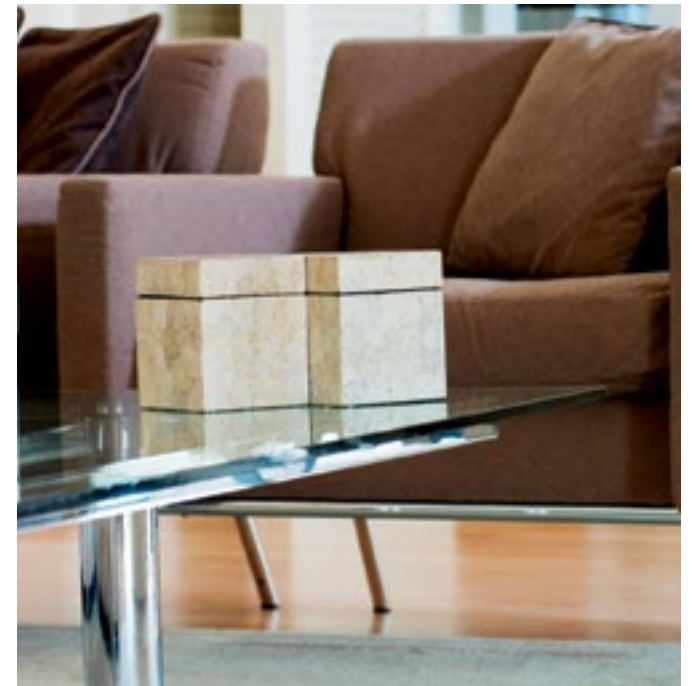
35,300

Completion Date
2016

Consultant
Arab Engineering Bureau

Architect
Arab Engineering Bureau

Location
Doha, Qatar



Movenpick- Ambassador Heights Hotel

Description

Ambassador Heights Residences is a residential development located off of Independence Avenue, next to the Mövenpick Ambassador Hotel in Accra, Ghana. The project is a design-build that consists of 18 high-end residential villas known as city homes.

Package

Wood works

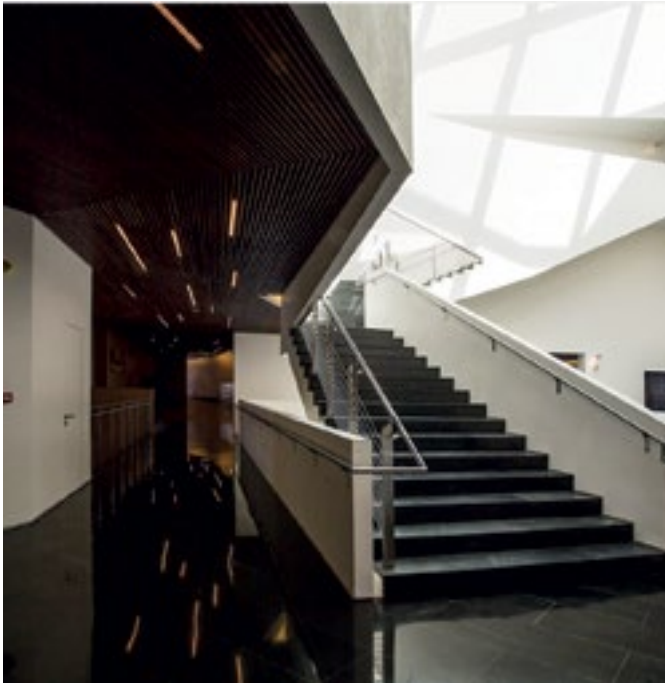
Built-up area (m²)
5,640

Completion Date
2016

Consultant
Dar Al Handassah

Architect
Dar Al Handassah - Simon Yammine

Location
Accra, Ghana



Summerland Kempinski Hotel and Resort

Description
5 Stars Hotel & Resort at Seaside west Beirut

Package
N/A

Built-up area (m²)
N/A

Completion Date
2015

Consultant
Samir Khairallah & Partners

Architect
SKP / Architectes Anonymes

Location
Beirut, Lebanon



Metropolitan Hotel

Description
5-star hotel with 25 floors with 200 guest.

Package
Furnishing from A to Z, loose and fixed furniture, and joinery interior works.

Built-up area (m²)
38,000

Completion Date
2001

Consultant
Khatib & Alami

Location
Beirut, Lebanon

Movenpick Hotel & Resort

Description
5-star hotel and resort with 308 rooms, 72 chalets, 1,010 cabins, 12 restaurants, a 35-store shopping center and two multipurpose rooms each with a 500-person capacity.

Package
Guest rooms and public areas were entirely furnished from interior wood joinery to soft and loose furniture.

Built-up area (m2)
114,000

Completion Date
2002

Consultant
J.V. ERGA Group/ D.G. Jones

Architect
Pierre-Yves Rochon

Location
Beirut, Lebanon

Le Gray Hotel

Description
5-star boutique hotel with restaurants, a swimming pool, spa, piano bar, and 90 suites that make up the seven upper floors.

Package
Wood joinery, acoustical exterior windows, wood fixed joinery & deco. Musharabieh ceiling, glazed partitions, stainless steel exterior, balustrade, structural steel-metal works and canopies.

Built-up area (m²)
33,000

Completion Date
2010

Consultant
Kevin Dash

Architect
Ateliers des Arch.Associes

Location
Beirut, Lebanon

Westin Harbor Hotel Aqaba

Description
5-star hotel with 300 guest rooms, executive, deluxe, manager, and presidential suites, an Asian restaurant, pool bar and children’s club.

Package
Mock-up, wood joinery, furniture, fixtures, and equipment.

Built-up area (m²)
36,000

Completion Date
2009

Consultant
Khatib & Alami

Location
Aqaba, Jordan

Sheraton Four Points Hotel

Description
Luxury hotel and resort

Package
Loose furniture and soft furnishing for guest rooms and public areas.

Built-up area (m²)
15,000 m²

Completion Date
2004

Consultant
Samir Khairallah and partners (SKP)

Architect
Galal Mahmoud

Location
Beirut, Lebanon

Le Royal Hotel

Description
5-star hotel with 124 rooms, 28 duplex suites, 16 executive suites, two royal suites, four conference rooms, five restaurants, a night club, 85 chalets and a health club.

Package
Woodworks

Built-up area (m²)
120,000

Completion Date
2001

Consultant
Khatib & Alami

Location
Dbayeh, Lebanon

Al Ghazala Intercontinental Hotel

Description
5-star hotel with 400 rooms and suites, a health club/spa, pool, restaurants and ballrooms.

Package
Woodworks

Built-up area (m²)
106,000

Completion Date
2015

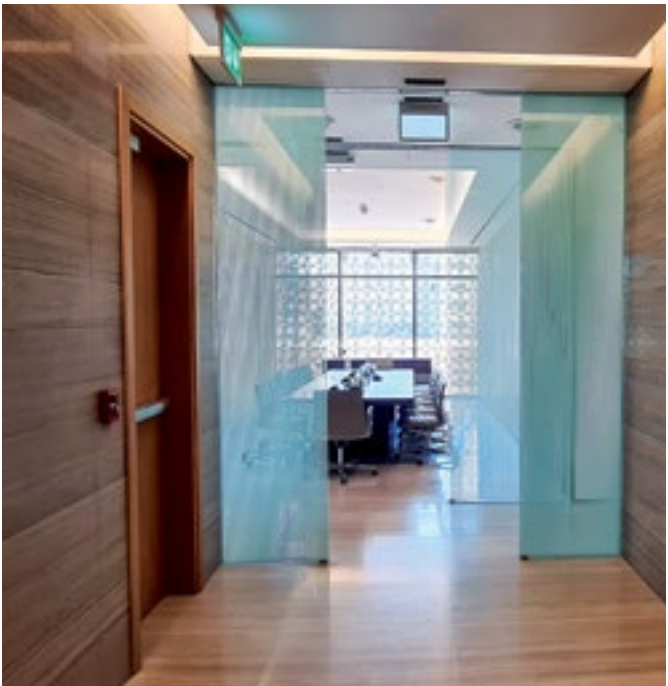
Consultant
PH Warr

Location
Tripoli, Libya



PROJECTS

Commercial & Institutional



UAE Embassy Lebanon

Description
The UAE Embassy in Beirut, Lebanon is a new smart architectural building. The site is prominently located in the Jnah area facing the Ramly el Bayda zone on Lot No. 3655.

The building has a total built-up area of approximately 8,500m2 allocated to a below-ground basement on two levels, two ground floor levels (lower and upper floors) and two floors above ground. All are used as Ambassador and Consulate offices with the necessary utilities such as waiting halls, reception areas, meeting rooms, conference rooms and so forth.

Package
Fit Out Works

Built-up area (m²)
8,500

Completion Date
2020

Consultant
Nabil Gholam architects

Architect
Nabil Gholam architects

Location
Beirut, Lebanon



US Embassy Lebanon

Description

NEC is an embassy complex, comprising 20 edifices. TECMAN's comprehensive role included diverse packages such as; millwork for kitchens, TV units, closets, vanities and desks. Regular and acoustical wall and ceiling cladding. A stainless railing package for both wall and floor-mounted railing and a steel package that includes fabrication of all embedded structural plates.

Package

Steel & Wood works

Built-up area (m²)

100,000

Completion Date

42 Months

Consultant

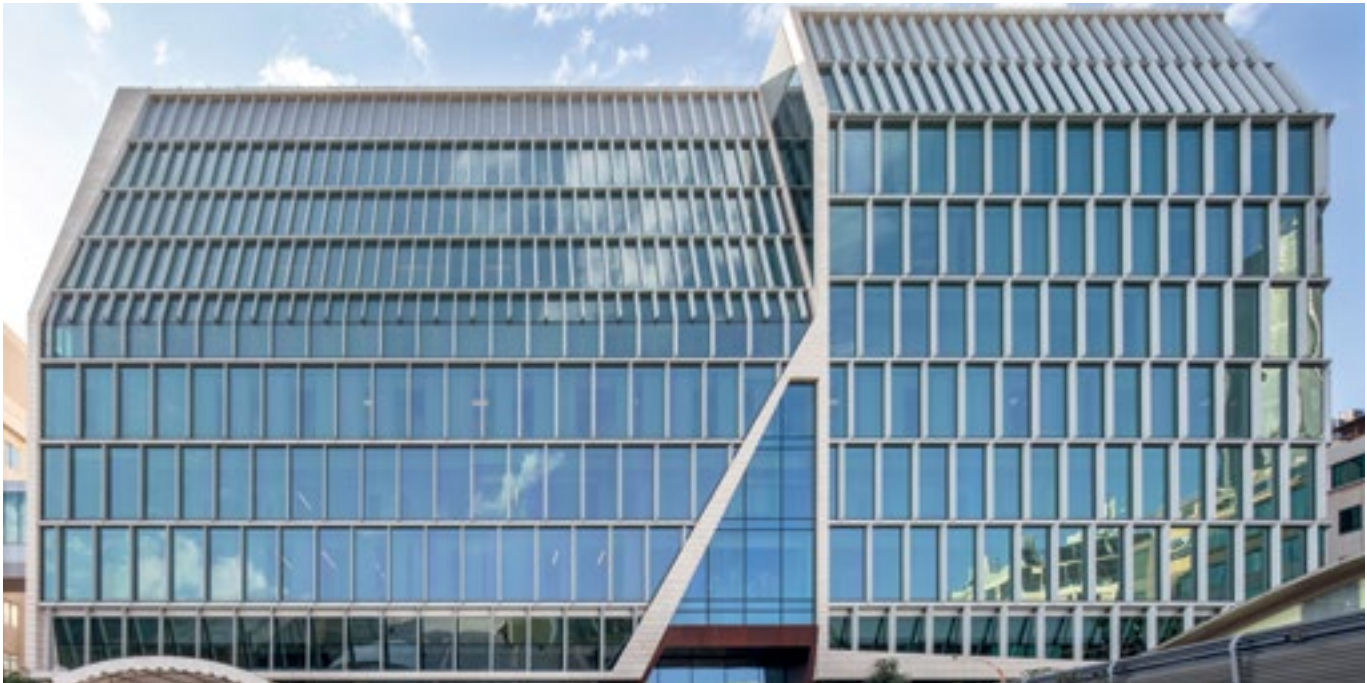
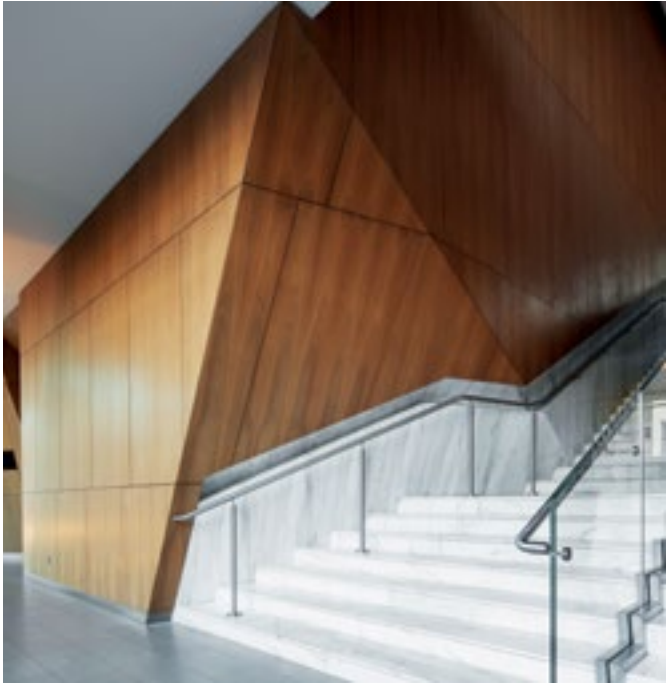
Morphosis

Architect

Morphosis

Location

Beirut, Lebanon



AUBMC Medical & Clinical Center

Description
AUB - Medical Center
Academic and Clinical Center

Package
Wood Works

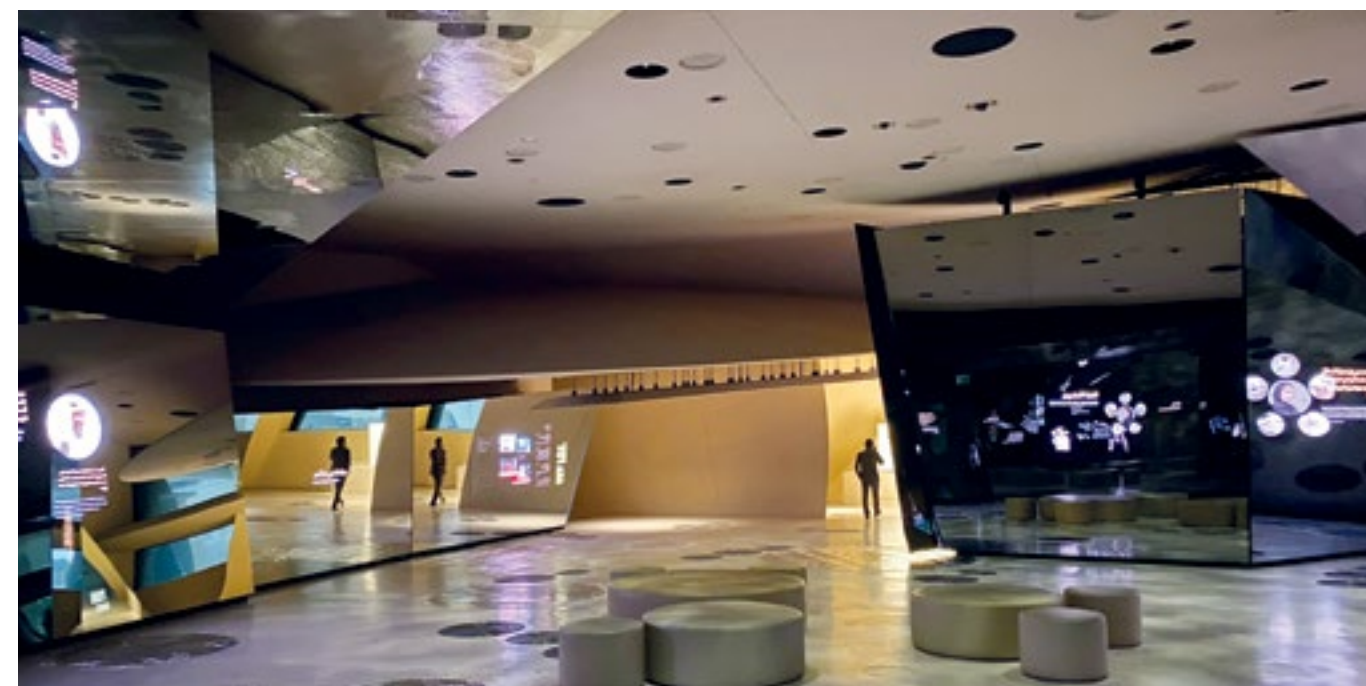
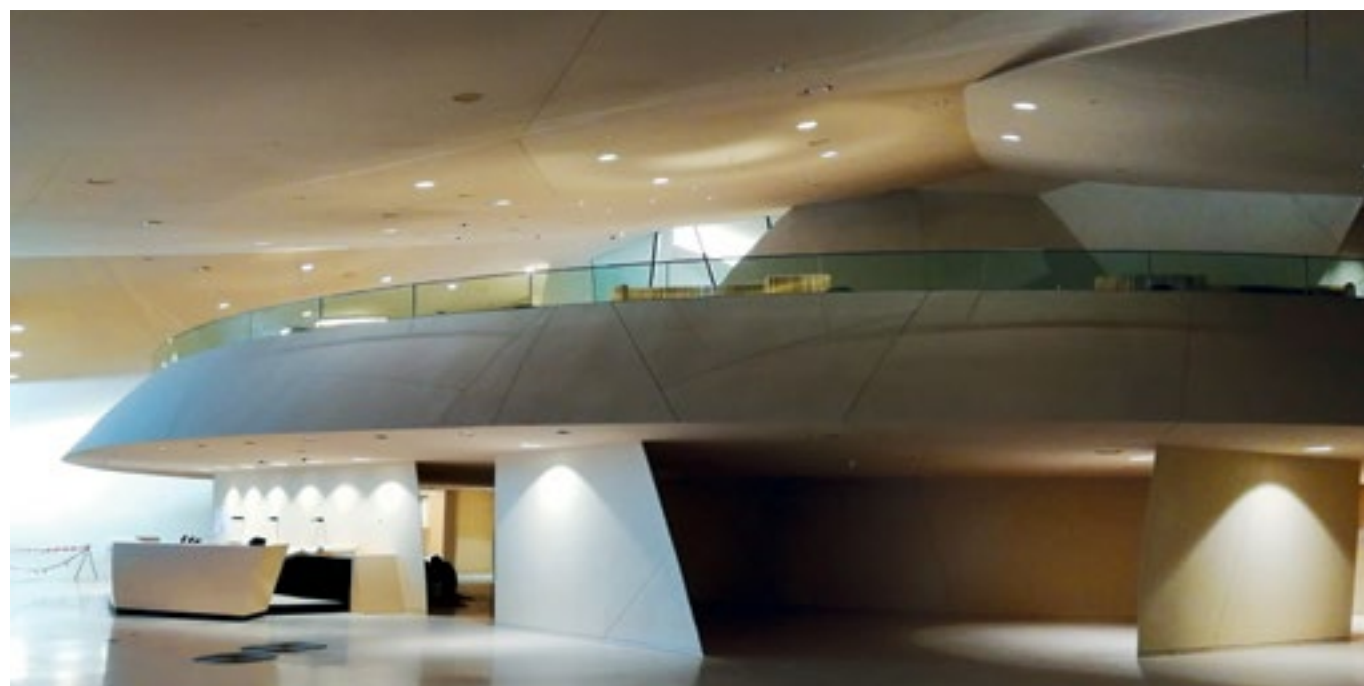
Built-up area (m²)
36,000

Completion Date
2017

Consultant
NBBJ - Khatib & Alami

Architect
NBBJ - Khatib & Alami

Location
Beirut, Lebanon



National Museum of Qatar

Description

An auditorium, two cafés, a restaurant, a museum shop, and facilities for school groups and VIPs.

Package

Fit Out Works

Built-up area (m²)
9,000

Completion Date
2019

Consultant
Ateliers Jean Nouvel

Architect
Jean Nouvel

Location
Doha, Qatar



Credit Libanais

Description

The Credit Libanais Headquarters Project consists of two blocks; A and B. Block A (Tower Building) is comprised of four basement floors, a ground floor, and 33 upper floors. Block B (Annex Building) is comprised of seven basement floors, a ground floor, a mezzanine, and two floors. Our scope included the steel, stainless steel and joinery works.

Package

Steel structures, Stainless Steel and Wood Works

Built-up area (m²)
50,000

Completion Date
2015

Consultant
Erga Group

Architect
Erga Group

Location
Beirut, Lebanon



Qatar Embassy UAE

Description

Refurbishment of the existing embassy and ambassador residence buildings along with the construction of a new majlis quarter, a swimming pool and landscaping work around the buildings.

Package

Fit Out Works

Built-up area (m²)

4,800

Completion Date

2013

Consultant

Engineer: Arab Engineering Bureau (AEB)

Architect

AEB

Location

Abu Dhabi, UAE



ABC Achrafieh

Description
Luxury shopping center, including cinemas, restaurants.

Package
Wood & Steel Works

Built-up area (m²)
120,000

Completion Date
2003

Consultant
A Consult (Dolly Braidy)

Location
Achrafieh, Lebanon

ABC Verdun

Description
ABC Shopping Mall

Package
Wood & Steel Works

Built-up area (m²)
150,000

Completion Date
2017

Consultant
Khatib & Alami

Location
Beirut, Lebanon

National Convention Center

Description
Car Park

Package
Wood Joinery-Metal-Stainless & Structural Steel

Built-up area (m²)
210,000

Completion Date
2010

Consultant
KEO International Consultants

Location
Ar-Rayyan, Qatar

Porto Arabia The Pearl

Description
Retail Space and Townhouses

Package
Wood & Steel Works

Built-up area (m²)
124,750

Completion Date
2010

Consultant
KEO International Consultants

Location
Doha, Qatar

Al Wadi Grand Residence

Description
Six residential buildings including a health club, a swimming pool, private parking, retail stores, kindergarten, luxury apartments, and duplexes.

Package
Wood Joinery-Metal-Stainless Steel

Built-up area (m²)
52,000

Completion Date
2012

Consultant
Atelier des Architects Associes / A. Menasseh Ingenieurs s.a.r.l

Location
Beirut, Lebanon

Lebanese Parliament

Description
Parliament Building Beirut, Lebanon, Nejme Square, is the central square in the downtown area.

Package
Refurbishment - Full Fit Out and FF&E

Built-up area (m²)
44,000

Completion Date
2011

Consultant
Aoun Architects

Location
Beirut, Lebanon

The Gate

Description
Three 16 storey commercial towers.

Package
Wood Joinery

Built-up area (m²)
95,000

Completion Date
2010

Consultant
Salam Business Development Co

Location
Doha, Qatar



City Mall

Description
City Mall

Package
Wood and Stainless Steel Works

Built-up area (m²)
220,000

Completion Date
2005

Consultant
D&H Engineering

Location
Dora, Lebanon

American Embassy Sudan

Description
American Embassy Coumpound in Khartoum Sudan

Package
Wood & Stainless Steel Works

Built-up area (m²)
102,000

Completion Date
2006

Consultant
Page Southerland Page

Location
Khartoum, Sudan

Ecole Nationale d’Administration

Description
Administrative offices, classrooms, gymnasium, auditorium, and other common facilities.

Package
Fit Out Works

Built-up area (m²)
25,000

Completion Date
2016

Consultant
ETEC

Location
Beirut, Lebanon

LAUMC–Renovation of Block D

Description
Re-purposing Block D of the Lebanese American University Medical Center to comprise of operation rooms and ICUs

Package
Wood, Aluminum, Steel and Stainless Steel Woks

Built-up area (m²)
7,800

Completion Date
2023

Consultant
Samir Khairallah & Partners

Location
Achrafieh, Lebanon

Al Emadi Tower

Description
The El Emadi Office Building consists of 30,385 m² and has two basements for parking and services, a ground floor entrance lobby, 19 office floors, and a lower roof level.

Package
Wood Works

Built-up area (m²)
30,400

Completion Date
2009

Consultant
G.H.D Clients People Performance

Location
Doha, Qatar

Habtoor Land

Description
This recreational park in Haret el Sit is built on 100,000 m2 of land and is comprised of rides, games, a main building, a souk, an amphitheater, restaurants, and a 420-space car park building.

Package
Wood & Steel Works

Built-up area (m²)
100,000

Completion Date
2005

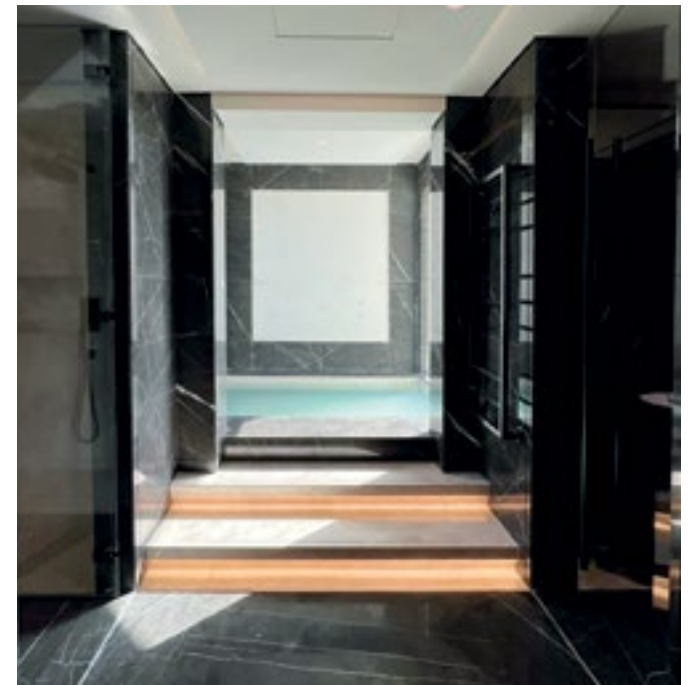
Consultant
Plan Libre

Location
Haret El Sit, Lebanon



PROJECTS

Residential



UBHOR Beach House

Description

This project is designed by renowned design office Xavier Cartron - Paris and it comprises various types of selective marble and stone flooring, with high-end architectural wood and metal designs and luxurious interior furnishings. The Villa is two floors and our scope of work is divided into two packages (Main Villa Area - P1 & Preserved Area - P2).

Package

Fit Out Works

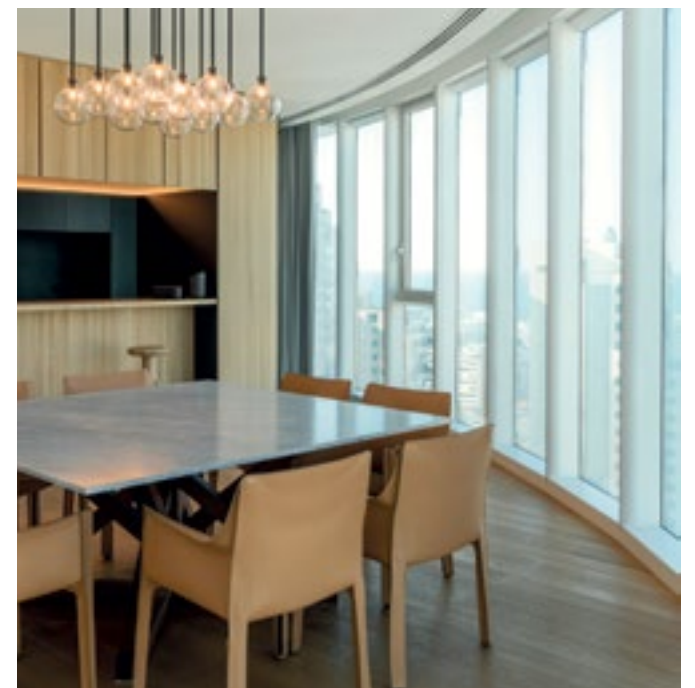
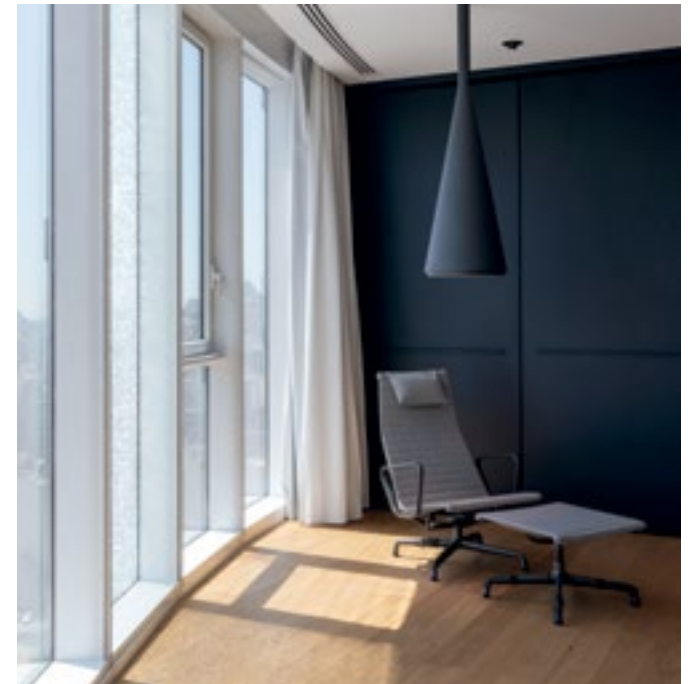
Built-up area (m²)
3,100

Completion Date
2022

Consultant
Xavier Cartron

Architect
Xavier Cartron

Location
Ubhor Al Shamaliyah - Kingdom of Saudi Arabia



Sama Beirut

Description

Located in the heart of Beirut city, Sama Beirut is the tallest and one of the most prestigious multi-complex high-rise towers in town. The project consists of six basements serving as parking, driver/cellar rooms and a gymnasium, two upper-level floors serving as retail space and 52 superstructure floors. It is comprised of 66 apartments and 13 office floors. Our scope included the steel, stainless steel and joinery works.

Package

Steel, Steel structures and Wood works

Built-up area (m²)

87,000

Completion Date
2022

Consultant
Erga Group

Architect
Erga Group

Location
Beirut, Lebanon



Viva Bahria Plots 22 & 23 The Pearl

Description

Located on the shore of The Pearl, the project consists of two residential towers of 88,000m² built-up area on two adjoining plots. Each tower has apartments on 22 floors, four levels of podium and car parks, and chalet/villas on the beachfront. Our scope of work included the steel, stainless steel and joinery works.

Package

Wood Joinery and Steel Structure

Built-up area (m²)
88,000

Completion Date
2013

Consultant
KEO International Consultants

Architect
KEO International Consultants

Location
Doha, Qatar



Beirut Terraces

Description

This iconic project is located in the heart of Beirut's Central District in the Mina al Hosn area. It is a high-rise residential building that is comprised of six basement levels, one retail floor, a ground floor, and 26 non-identical residential floors. The total built-up area of the project is 110,000m² and contains 130 residential apartments. Herzog & de Meuron's unique design created many engineering challenges during the construction phase. Our scope of work included the Steel structure of the building, Stainless Steel, and joinery Works.

Package

Wood works, Stainless Steel and building Steel Structure

Built-up area (m²)

110,000

Completion Date

2016

Consultant

Herzog & de Meuron / Khatib & Alami

Architect

Herzog & De Meuron's

Location

Beirut, Lebanon



Versace Tower Beirut

Description

Damac Tower, situated in the heart of Beirut, provides luxury, high quality, and aesthetic living through a unique partnership with world-renowned Italian designer Versace Home. The tower consists of four basements, a ground floor, and 28 upper floors.

Package

Fit Out Works

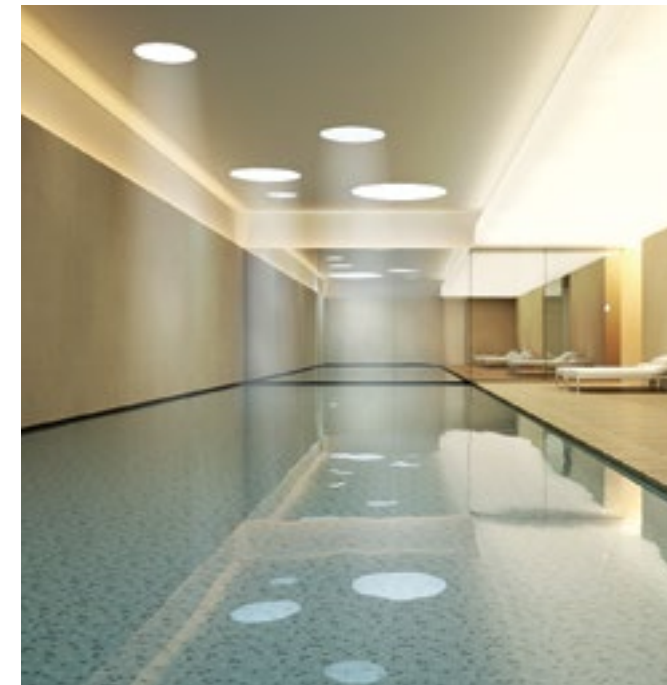
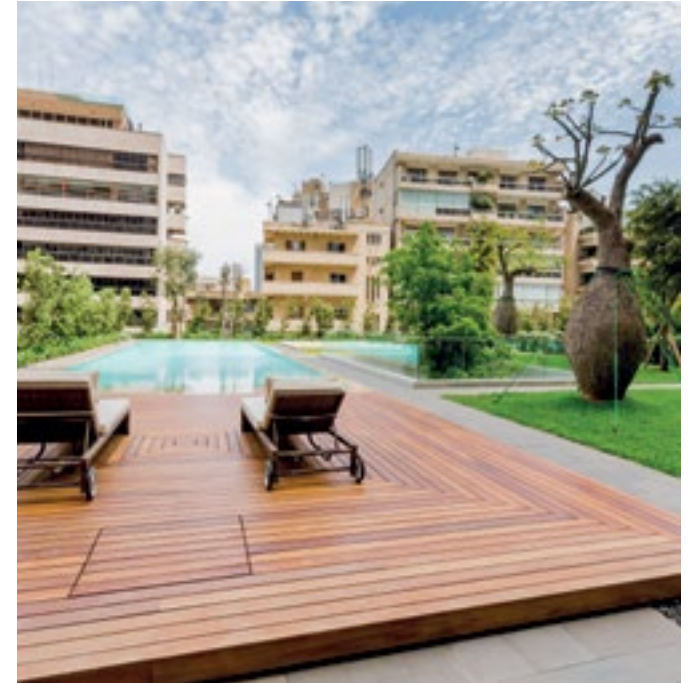
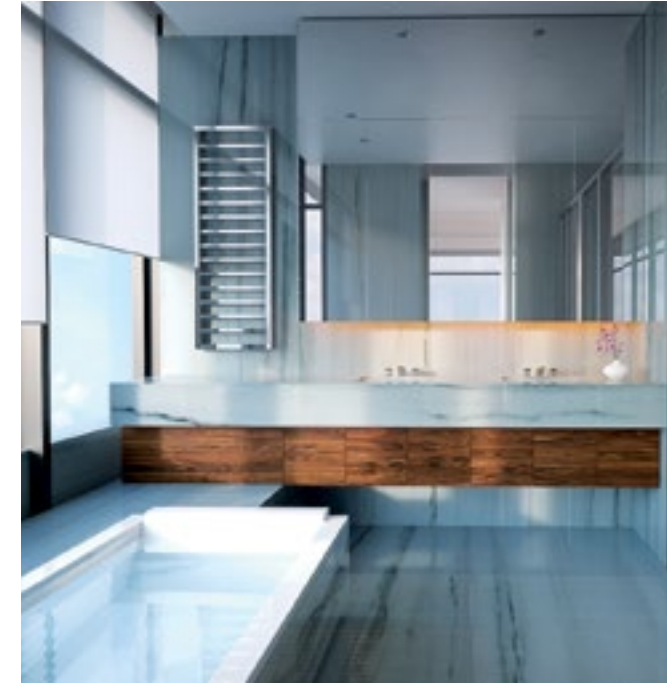
Built-up area (m²)
50,000

Completion Date
2013

Consultant
Erga Group

Architect
Valode & Pistre Architectes

Location
Beirut, Lebanon



Sky Gate

Description

Located in the heart of Beirut city, Skygate is one of the most prestigious residential towers in town. The project consists of six basements serving as parking, driver/cellar rooms, a gymnasium, and two upper-level floors as retail space. 42 superstructure floors offer 55 apartments and several pools/greeneries. Our scope of work includes the steel, stainless steel and joinery works.

Package

Steel, stainless steel and joinery works

Built-up area (m²)

55,000

Completion Date

2013

Consultant

Nabil Gholam Architecture & Planning

Architect

Nabil Gholam Architecture

Location

Ashrafieh, Lebanon



Viva Bahriya Towers 14 & 15 The Pearl

Description

Viva Bahriya Towers 14 and 15 are two residential towers on The Pearl in Qatar with a built-up area of 90,000m². Each tower consists of two car park levels, a ground floor with landscaped areas, swimming pools, chalets and 235 apartments across 23 floors. Our scope included the steel and joinery works.

Package

Steel and joinery works

Built-up area (m²)

90,000

Completion Date

2018

Consultant

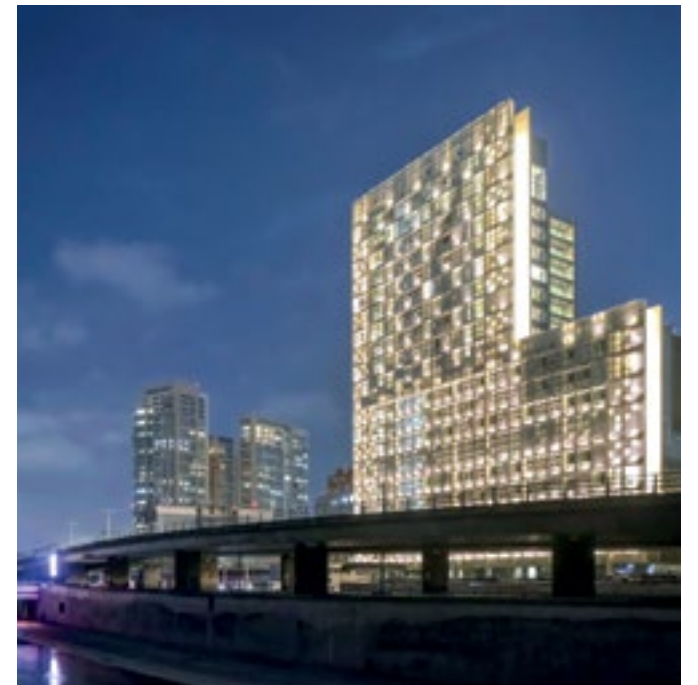
Shaker Consultancy Group

Architect

Shaker Consultancy Group

Location

Doha, Qatar



Zeena Tower

Description

This multipurpose iconic project is a mixed-use development with office areas, retail areas and residences. The project consists of three basements, a ground floor, mezzanine, technical floor, and 20 upper floors. The project features an ultra-high-performance concrete perforated façade covering the north elevation of the tower. Our scope included the steel, stainless steel and joinery works.

Package

Steel, stainless steel and joinery works

Built-up area (m²)

44,000

Completion Date
2019

Consultant
Samir Khairallah & Partners

Architect
Architecture Studio

Location
Beirut, Lebanon



District //S

Description

Located in the heart of Beirut's elegant Saifi district, this project resembles a city within a city with its 22 buildings divided into approximately 40,00 m² of residential space, 70,000m² of parking space and 10,000m² of retail space with a total footprint area of 13,000m². District //S has redefined the standards and norms of high-quality developments made by Allies and Morrison Architects by embracing a complete urban plan according to LEED requirements. Our scope includes the steel, stainless steel and joinery works.

Package

Fit Out Works

Built-up area (m²)

133,000

Completion Date

2015

Consultant

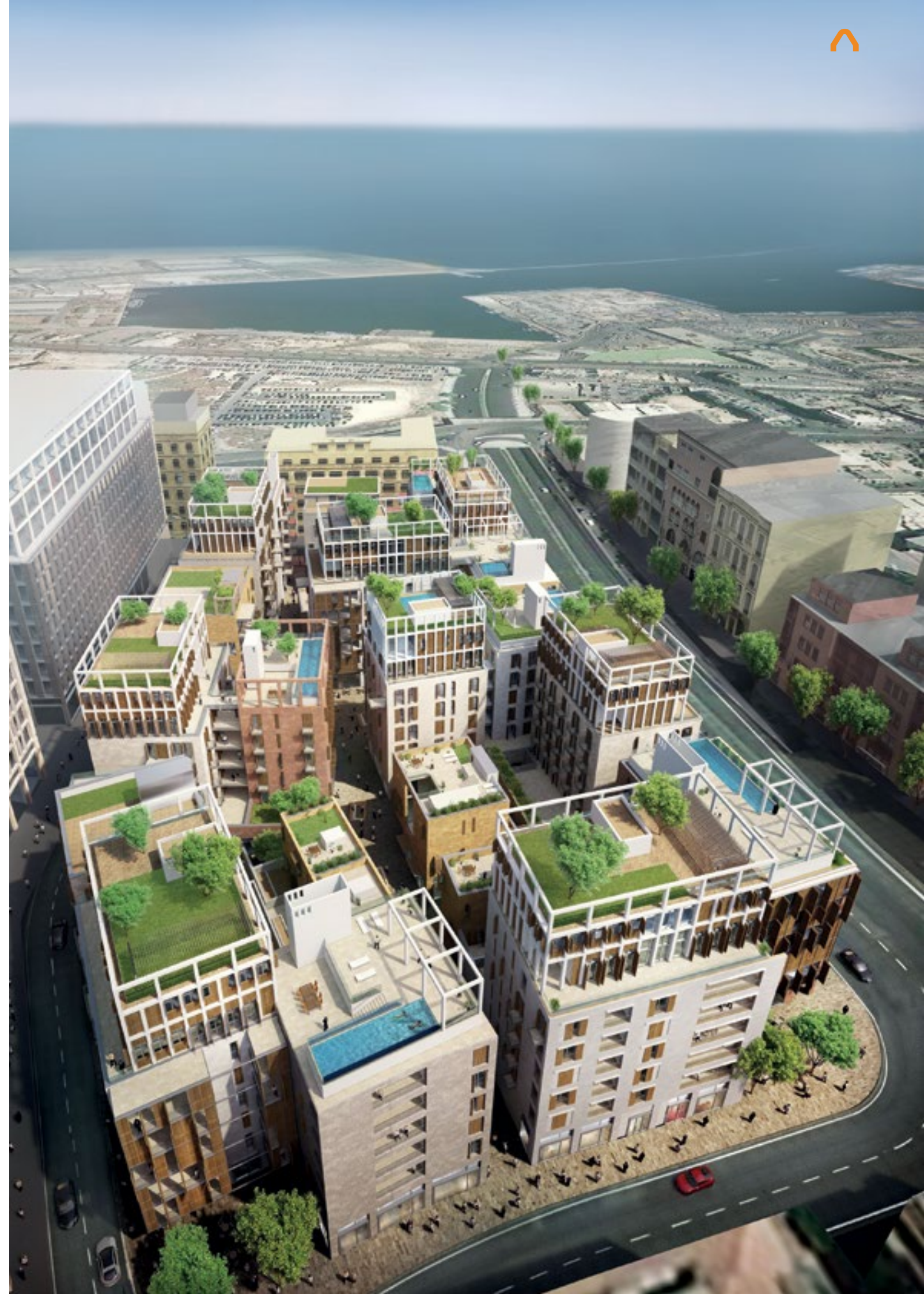
R&K – Rafik El Khoury & Partners – G Building

Architect

Allies and Morrison Architect

Location

Beirut, Lebanon





**Constructive
Impact**



As the world re-evaluates its choices, at TECMAN we work towards being a part of these solutions and as such have aligned to operate under high ethical standards to maintain the safety of our employees and preserve the environment while still delivering high-end products.

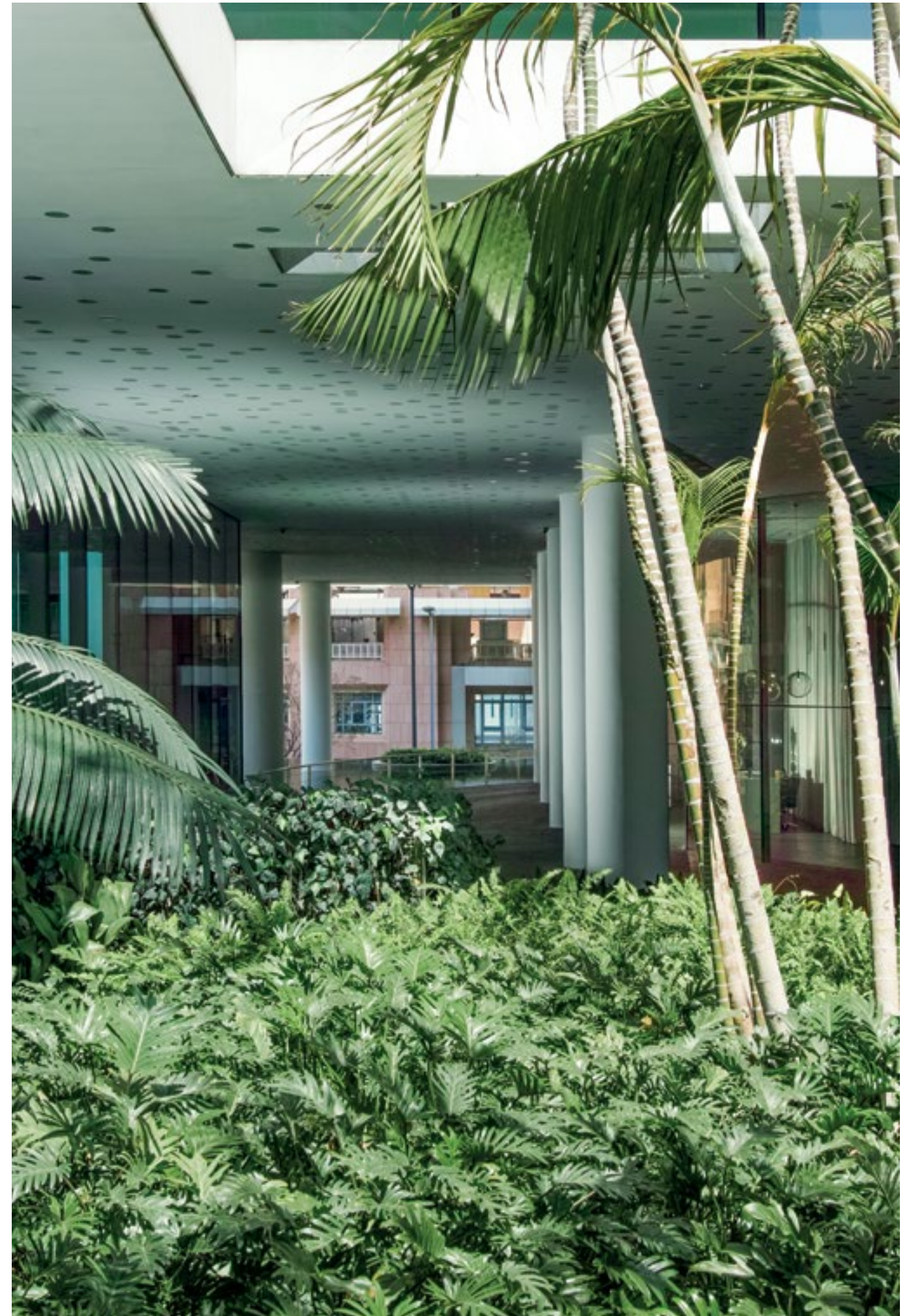


Our latest ESG report showcases our commitment to eco-friendly manufacturing by adopting and applying Environmental and Social Governance.

By Implementing Industry 4.0, the machines are automated and computerized to optimize the operation, maximizing the efficient use of resources, reducing waste and CO2 emissions.

- Environmental:
 - Air filtering systems to collect dust and pollutants from industry exhausts
 - Adopting smart systems cutting to minimize waste generation
 - Segregation of waste for re-use or recycling purposes
 - Water usage to prevent paint dust generation with proper treatment and disposal of WW
 - Use 30% of energy from renewable energy (solar)
- Social:
 - Achieve the highest level of safety
 - Ensure gender equality
 - Ensure a diverse workforce with the highest level of engagement
 - Provide a plausible working environment
 - Ensure a high level of client satisfaction
 - Provide a positive impact on surrounding communities
- Governance:
 - Incorporate sustainability concepts in work strategy: FSC-certified wood
 - Maintain strong governance to maintain shareholder value
 - Uphold the highest ethics and leadership value
 - Lead in the supply chain practices for environment, ethics and employment

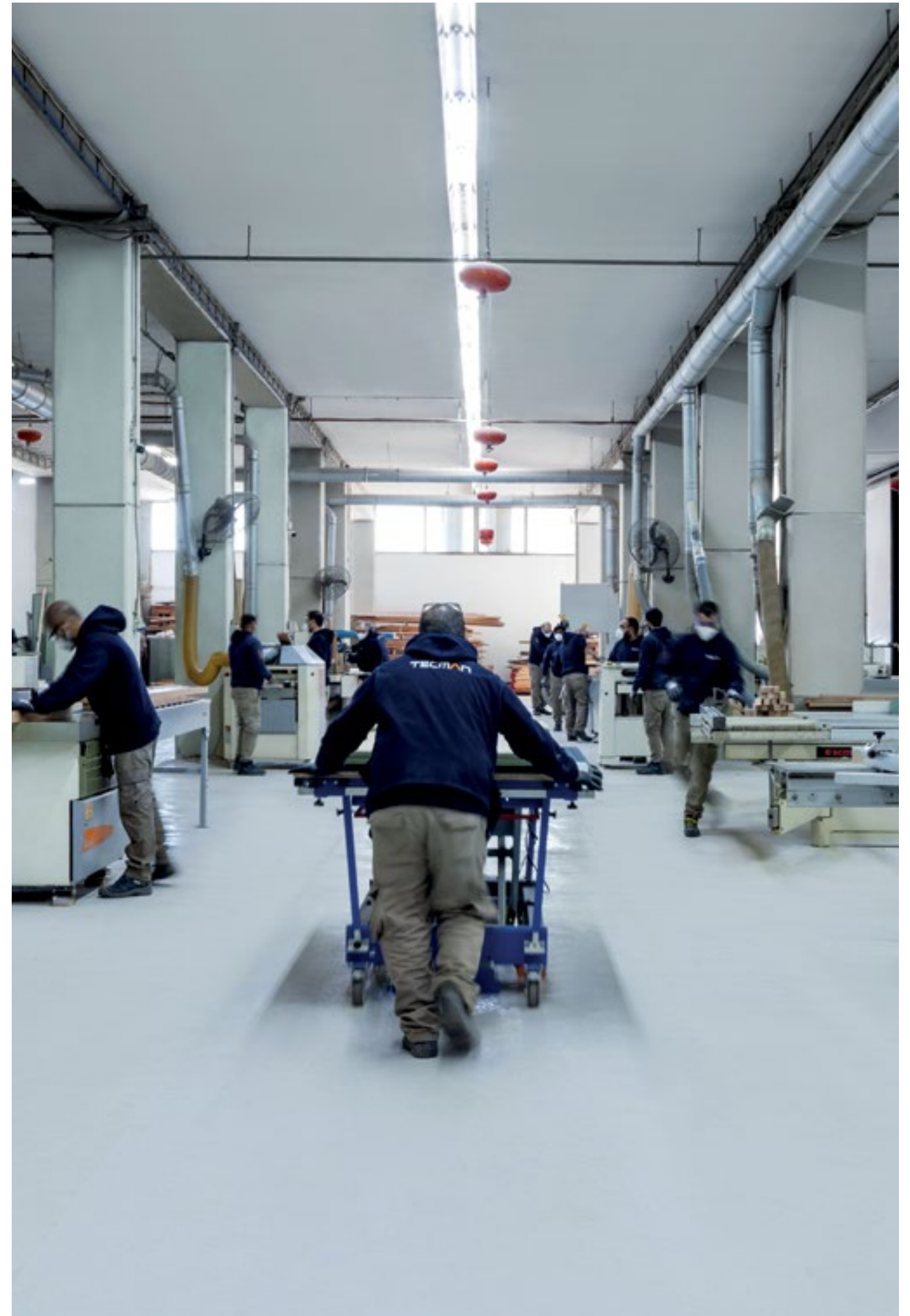
Environmental, Social, and Governance (ESG) Commitments



At TECMAN, our employees are the essence that runs the workplace, and we are devoted to ensuring their safety. As a result, we have rigorously implemented the following:

- A Strict Safety Policy during Manufacturing and Management.
- Full-time presence of Safety Manager, Supervisors and Fire Wardens.
- Advanced training by renowned professionals.
- Equipped with Protective gear and systems.
- Risk assessment and emergency response training.
- Our machines are equipped with dust controls and safety stops.
- Workshops are equipped with first aid and medical facilities.

Our People





We are always aligned with cutting-edge technologies and the latest in safety and quality standards.

TECMAN uses Industry 4.0, which revolutionizes and improves the manufacturing and distribution of products by integrating new technologies, including the Internet of Things (IoT), cloud computing and analytics, AI and machine learning, into our production facilities and operations.

Spearheading the Industry



We bring excellence to our clients wherever they are. As we have done since 1940 from our small workshop in Gemmayze, Beirut.

Over the years, our mission has remained the same; to combine collaborative engineering processes, manufacturing precision, and meticulous management to provide our clients with high-end products and services.

Our competitive edge is highlighted by our business ethics and work culture – encompassed through our unwavering commitment to the needs of our clients, and exceeding their expectations: The foundation for building and maintaining long-lasting business relationships.

Culture of Excellence



TECMAN Industry S.A.L.
Industrial Valley, Nahr el Mot, Jdeideh
Metn, Lebanon
PO Box: 901980
Email: info@tecman.co
Telephone: +961 1 879 111



tecmanindustry.com